

LN PRESS:
CAN. J. Zool.
12/92

RICHARD J. NEVES

For Tankersley
Final Dimock
1992

ENDOSCOPIC VISUALIZATION OF THE FUNCTIONAL MORPHOLOGY OF
THE CTENIDIA OF THE UNIONID MUSSEL PYGANODON CATARACTA¹

by

Richard A. Tankersley² and Ronald V. Dimock, Jr.
Department of Biology
Wake Forest University
Winston-Salem, NC 27109

Correspondence Address : Richard A. Tankersley
Duke University Marine Laboratory
Pivers Island
Beaufort, NC 28516-9721
Phone: 919-728-2111
Fax: 919-728-2514

¹ A copy of excerpts from the endoscopic video recordings of Pyganodon cataracta suspension feeding and ctenidial morphology described in the current study is available by sending a blank ½ inch VHS video cassette and return postage to the authors.

² Current Address: Duke University Marine Laboratory
Pivers Island
Beaufort, NC 28516-9721

ABSTRACT

Tankersley, R.A. and Dimock, R.V., Jr. 1992. Endoscopic visualization of the functional morphology of the ctenidia of the unionid mussel Pyganodon cataracta

During reproduction, the outer demibranchs of the unionid mussel Pyganodon cataracta serve as marsupia, with incubation of the developing shelled glochidia larvae occurring within the water tubes. This study employed recently developed endoscopic video analysis techniques to examine in vivo the dynamics of filter feeding and water transport in mussels from gravid and post-gravid periods. Particles entering the mantle cavity and retained by the gills were transported to the palps in a complex mucus-bound chord by the ventral food groove of the medial ctenidia. Larval incubation and ctenidial swelling impeded flow around the lateral demibranchs although marsupial ctenidia were still actively involved in suspension feeding. Cilia on the distended ventral edge were often observed transporting filtered particles to the frontal surface of the medial gill. Larvae within the brood chambers were morphologically isolated from the surrounding medium by dorsal brood caps on the primary water tubes. Direct observations of secondary water tubes of marsupial gills constructed during periods of larval incubation confirmed their role as temporary lumina for water transport during gravid periods. Time-lapse video recordings revealed that mature larvae are released from the brood chambers via the suprabranchial cavity and exhalant siphon by rapid adductions of the valves and contractions of the brooding demibranchs.

INTRODUCTION

Early descriptions of the structure of the gills and morphology of the brood chambers of freshwater unionid bivalves were based upon observations of preserved or freshly dissected tissue (Ridewood 1903; Lefevre and Curtis 1910; Ortmann 1911). More recent studies, employing modern histological techniques and electron microscopy, also can provide only static evidence of the functional morphology of the bivalve gill, especially in relation to their potentially conflicting roles in ventilation, suspension feeding, and larval incubation (Kays *et al.* 1990; Gardiner *et al.* 1991; Richard *et al.* 1991; Tankersley and Dimock 1992).

While the roles of gill cilia and cirri in producing water currents and capturing and transporting suspended particles over the surface of the gills of bivalve molluscs have been well documented (see Ward *et al.* in press for review), the opaque shells of adult animals prohibit direct observations of the fluid dynamics and structures involved in suspension in intact animals. To date, most *in vivo* observations of gill ciliary activity and particle filtration have been conducted either using juveniles possessing thin and relatively transparent shells (Dral 1967; Jørgensen and Ockelmann 1991; Reid *et al.* 1992) or have involved the removal of sections of the valves or mantle of adults (MacGinitie 1941; Bernard 1974; Foster-Smith 1975a, 1978; Jørgensen 1975, 1976; Reid *et al.* 1992). Recently, however, Ward *et al.* (1991) have introduced a new technique employing video endoscopy for *in vivo* observations of the gills and feeding structures of live, intact adult bivalves.

We have previously described and quantified the structural changes associated with larval incubation in the freshwater unionid mussel *Pyganodon cataracta* (Tankersley and Dimock 1992) (formerly *Anodonta cataracta*; Hoeh 1990) and demonstrated that particle filtration, retention, and transport are significantly affected by the presence of developing glochidia in the brood chambers of the lateral gills (Tankersley 1992). However, exactly

how particles are processed by the ciliary tracts of gravid marsupial demibranchs under natural conditions is still a matter of inference and conjecture. Furthermore, the construction of secondary water tubes producing the tripartite arrangement of the marsupial gills of anodontine mussels (Ortmann 1911; Richard *et al.* 1991; Tankersley and Dimock 1992) has been assumed to be associated with the maintenance of water transport during larval incubation, but their role as temporary lumina for gill irrigation has never been confirmed. Direct observation of ambient water flow through the mantle cavity and water tubes is necessary in order to relate any changes in suspension feeding and water transport directly to modifications in ctenidial architecture accompanying larval brooding.

While it often has been assumed that mature glochidia are released dorsally from gill brood chambers and expelled through the exhalant siphon, most descriptions of larval release have been based upon anecdotal reports of the position of glochidia following their release or the rupture of the gills of freshly dissected or preserved mussels (Ortmann 1911; Matteson 1955; Yokley 1972; Richard *et al.* 1991). Ortmann (1911) reported that most unionids, including some of the Anodontinae, release glochidia *via* the suprabranchial cavity and exhalant siphon, which he argued was consistent with *a priori* predictions based upon the fluid dynamics within the infra and suprabranchial cavities and the position of the siphons *in situ*. More recently, Richard *et al.* (1991) concluded from the results of mechanical stimulation of swollen demibranchs, that mature glochidia of *Pyganodon* (= *Anodonta*) *grandis* are released from the stretched and ultimately ruptured ventral margin of the marsupial gill, a pattern of glochidial exodus that is consistent with the descriptions of larval discharge for several lampsilines (Ortmann 1911). Although the timing and mechanisms involved in glochidial release most likely vary among species with different marsupial morphologies and durations of larval incubation (see Kat 1984 for review), the relative isolation of the brood chambers within the marsupial demibranchs has made direct observations of the process of glochidial release in undisturbed mussels impossible.

In this study, we utilize endoscopic techniques and video analysis (Ward et al. 1991) to make in vivo observations of the morphological features and flow dynamics of the marsupial and non-marsupial gills of Pyganodon cataracta, including the architecture of the primary and secondary water-tubes and brood chambers. The results reported in this study provide the first direct evidence for the function of gravid marsupial gills in particle capture, the role of the secondary water tubes as temporary conduits for gill irrigation during and immediately following larval brooding, and the release of mature glochidia via the suprabranchial chamber.

MATERIALS AND METHODS

Endoscopic examination of the gills and feeding structures of Pyganodon cataracta followed the basic procedure recently described by Ward et al. (1991). All observations were made using a 2.7 mm diameter x 18 cm endoscope (Model K27-18-00-62, Olympus Corp.) fitted with a fiber optic light (cold-incandescent) source (Fig. 1A). Video recordings of pallial organs and ctenidia were made by attaching the ocular of the scope via a c-mount adapter to a Javelin CCD color camera (Model JE 3462HR). Most images were recorded on a ½ inch VCR (Mitsubishi Model U32; 30 Hz frame rate) and viewed on a color monitor. Long-term monitoring of larval release from the brood chambers of gravid mussels was conducted using a JVC ½ inch time-lapse video recorder (Model BR-9000U) at a scanning rate of 1.25 Hz. The camera and endoscope were mounted on a micromanipulator which permitted precise positioning of the endoscope within the mantle and suprabranchial cavities. The tip of the scope provided a 62° field of view, a minimum focal distance of ≈ 5 mm, and a maximum magnification of $\approx 150\times$.

Adult Pyganodon cataracta (shell length ≈ 11 -15 cm) were collected from Speas' (Yadkin County, North Carolina) and Myer's (Forsyth County, North Carolina) ponds during brooding (December-January; 9-10 °C) and post-brooding (February-March; 12-15 °C) periods of their reproductive season. Mussels were mounted stationary in a 20 cm x 15 cm x 23 cm lucite chamber containing 5.7 liters of artificial pond water (0.5 mM NaCl, 0.4 mM CaCl₂, 0.2 mM NaHCO₃, 0.05 mM KCl) by gluing a 1 cm diameter plastic bolt to the center of one valve and attaching it to a 15 cm x 3.5 cm plastic vertical guide in the middle of the chamber (Fig. 1A). The position of the mussel was adjusted so the tip of the endoscope could be easily inserted into the mantle or suprabranchial cavities via the pedal gape or exhalant siphon, respectively. Mussels were prevented from closing on the stainless steel shaft (optical insertion tube; OIT) of the endoscope by inserting a 1 cm

diameter plastic wedge between the valves along the ventral margin near the location of endoscope insertion. Water within the chamber was maintained at collection temperatures by a thermostated water bath.

Suspension feeding and particle transport by gill ciliature on the frontal surface of the lamellae and the flow dynamics inside the mantle and suprabranchial cavities were monitored by adding 10 μm diameter fluorescently labeled latex particles (Duke Scientific Corp., Palo Alto, California) to the suspension inside the chamber. The green dye incorporated in the spheres made them highly refractive and easily distinguishable from background mussel tissue even under standard incandescent illumination. Although the resolution of the endoscope/video camera setup depended somewhat upon the magnification, light intensity and the reflectance of the particles and tissue, under most conditions movement of single particles could be easily monitored.

Still image photographs (video micrographs) were made from video recordings by capturing and enhancing single video frames using a Video Image 1000 frame grabber (Image Systems Technology) and image analysis software (NIH Image) running on a Macintosh IIfx computer. Prints of stored digital images were made from negatives produced using a ColorFast Digital Film Recorder (GCC Technologies, Inc.) and T-max ISO 100 film (Eastman Kodak Co.).

RESULTS AND DISCUSSION

Gill Morphology and Observations of Suspension Feeding

The large valve gape and unfused mantle margin of *Pyganodon cataracta* permitted insertion of the tip and OIT of the endoscope between the valves along most of the ventral aspect of the mussel and into the medial cavity (space between the inner demibranchs) and the medio-lateral cavities (space between an inner and outer demibranch), facilitating video recordings of the ventral and frontal surfaces of gills and the labial palps (Fig. 1B). Unfortunately, the OIT limited movement within the mantle cavity and lateral-medial expansion of gravid marsupial gills made observations of the infrabranchial regions, especially the lateral (space between the lateral gills and mantle tissue) and medio-lateral cavities, of females difficult (Fig. 1B).

Shortly after the insertion of the endoscope between the valves, mussels appeared to resume normal pumping activity (valves open and siphons extended) and fluorescent particles could be observed entering the mantle cavity in inhalant water and flowing around both the medial and lateral gills, frequently following curving paths into the infrabranchial spaces between adjacent demibranchs (Figs. 2A and 2B). Particles retained by both marsupial and non-marsupial gills were transported ventrally toward the free margin of the ctenidia, most likely either by direct contact with frontal cilia located on the tips of adjacent filaments or by frontal currents generated by the cilia (see Ward *et al.* in press). The relatively flat homorhabdic lamellae of *P. cataracta* lacked plicae and there were no apparent regional differences over the surface of the gill either with respect to the distribution of active cilia or portions of the gill engaged in particle capture. Most particles traveled individually along a given gill filament although mucus-bound clumps of particles were occasionally observed, especially at high particle concentrations.

Although ctenidial swelling limited the circulation of water into the medio-lateral cavities of gravid mussels, ciliary tracts on the ascending and descending sides of the

lamellae were active and participated in the capture and transport of particles despite the extensive gill modifications associated with larval incubation. Nevertheless, many fewer particles appeared to be retained and processed by gravid marsupial gills as compared to the lateral gills of males or similar demibranchs of females following larval discharge.

Latex particles that were "caught" by the medial demibranchs traveled down both the ascending and descending faces of the lamellae toward the free margin of the gill and became trapped and concentrated in mucous threads that moved anteriorly toward the palps and mouth in a well defined and heavily ciliated ventral food groove (Figs. 2C). Under high particle concentrations the edges of the groove expanded, but larger mucous chords often projected beyond the ventral edge of the relatively shallow furrow. Although particle capture and retention appeared to be the result of ciliary generated currents near the frontal surface of the gill, these densely packed particle/mucous strings moving in food grooves appeared to be the primary pathway by which filtered particles ultimately were ingested. There was no evidence indicating that the marginal groove served to spatially separate non-mucoid feeding currents inside the furrow from gill and mantle cleaning currents transported outside the furrow (*i.e.* mucous strings) as suggested by Jørgensen (1981) for *Mytilus* and several other bivalves. Furthermore, very few particles were seen traveling dorsally along the frontal surface of the lateral gills toward the ctenidial axis as has been reported for many other unionid species by Atkins (1937). Unfortunately, the endoscope system did not permit thorough viewing of the dorsal regions of the medio-lateral and lateral cavities to determine if alternative pathways of particle transport, such as the anteriorly directed slurries present in dorsal ciliated tracts of several marine bivalves (Beninger *et al.* in press; Ward *et al.* in press), are also involved in delivering captured particles to the palps. In contrast to the inner demibranchs, the free margin of lateral gills of both sexes lacked a well developed food groove. Particles were frequently observed dropping off the ventral edges of the lateral ctenidia and becoming entrained in currents generated by the cilia on the descending surface of the medial gills.

In gravid lateral demibranchs, the ventral margin of the gill is greatly distended as a consequence of the extensive swelling of the occupied brood chambers, but lacks any external features (*i.e.* indentations or sulci) identifying the position of the internal septa and brood chambers (Fig. 3A). However, particles retained by these lateral demibranchs also were transported on the stretched epithelium of the ventral surface, indicating that this region of the gill possessed active cilia. On several occasions, the extensive stretching of the ventral epithelium permitted observations of the dark calcified shells of developing glochidia within semi-transparent water tubes. Immediately following larval release, the distended ventral surface of marsupial demibranchs becomes deflated and convoluted (Fig. 3B). Glochidia are released sequentially from the brood chambers in a posterior-anterior order. Several mussels collected during the release period possessed marsupia that were only partially full, which is consistent with patterns of larval discharge reported for other anodontine mussels (Ortmann 1911). Although particle retention and transport appeared hampered in brooding demibranchs, filtration activity increased in regions of marsupial gills containing empty brood chambers, and particles often were seen moving along the convoluted ventral gill margin toward the frontal surface of the descending lamella of the underlying medial gill (Fig. 3B). Furthermore, there was no indication that the ventral tissue of marsupial gills had been damaged or ruptured to facilitate larval release as has been suggested for Pyganodon (=Anodonta) grandis by Richard *et al.* (1991).

Anteriorly the ventral edge of the lateral demibranchs inserts between the inner ridged surfaces of the paired palps located on each side of the mussel's body [category I association as outlined by Stasek (1963)] (Fig. 2D). Mucus-bound particles traveling along the medial food groove were transferred as continuous strands to the opposing surfaces of the labial palps at the point of branchial contact (Figs. 2D and 2E), a pattern which is consistent with the observations of Ward *et al.* (in press) for Crassostrea virginica, Mytilus edulis, and Mya arenaria. The outer surface of the palps is smooth but small mucous threads containing particles could occasionally be seen moving (most likely

propelled by cilia) across the outer surface into the space between the appressed palp lamellae. Placement of the endoscope between the lamella of the palps revealed the intense metachronal activity of ciliary bands and the deep grooves located on the inner surfaces (Fig. 2F). Unfortunately, the slow scan rate of the video recorder (30 Hz) did not permit accurate quantification of the beat frequency of the large undulating cilia.

Individual and mucus-embedded clumps of latex beads could be seen in the furrows of the palp inner surface, but most were associated with the compact mucus/particle strings which remained relatively intact as they were transported anteriorly toward the mouth, aided by beating of cilia on the opposing surfaces of the palps (Figs. 2E and 2F). Although the morphological characteristics of the grooved and ciliated structures of the palps suggested that they may be involved in mechanical processing and handling of individual particles, there was no apparent breakdown in the viscosity of the mucus cords by the palp cilia (Newell and Jordan 1983) and no pre-ingestive sorting of the entrapped particles was noted even at high particle concentrations. These observations are consistent with those of Foster-Smith (1975a,b, 1978) who proposed that palps primarily function to control ingestion by either transporting mucus-bound material to the mouth or rejecting it as pseudofeces. Although the ridges of the palps most likely lead to a proximal oral groove and mouth, the tip of the endoscope could not be inserted more than a few mm past the margin of the palps without becoming fouled by particles and mucus. Therefore, it is unclear whether particles were ingested as mucus-bound chords as suggested by Morton (1960) and Beninger *et al.* (1991) or free in suspension (Jørgensen 1981; Kiørboe and Møhlenberg 1981; Jørgensen *et al.* 1984).

Water Tube Morphology of Non-Marsupial Gills

Once inserted into the suprabranchial cavity through the exhalant siphon, the tip and OIT of the endoscope could be navigated to rest within the suprabranchial space between the ascending and descending lamellae of the ctenidia. In *P. cataracta*, the

suprabranchial cavity is a relatively large and straight opening running antero-posteriorly along the dorsal margin of the demibranch allowing the endoscope to be positioned at almost any point along its entire length. There were no apparent differences in the arrangement of the water-tubes of non-marsupial demibranchs of males (inner and outer demibranchs) and females (inner demibranchs), and the suprabranchial cavities of each ctenidium were morphologically isolated from one another except at their posterior end where they opened into a common atrium just anterior to the exhalant siphon. In non-marsupial gills, interlamellar septa connecting the opposing sides of the gill formed relatively equally spaced and parallel water tubes running dorso-ventrally parallel to the gill surface (Figs. 4A and 4B). During periods of active pumping, the ctenidia became inflated and the v-shaped terminal connections of the thin septa permitted the water tubes and the suprabranchial cavity to expand along the gill's medial-lateral axis to accommodate the water traveling toward the exhalant siphon. In general, the distended parallel water tubes of non-marsupial gills appeared more cylindrical in cross section than in previous observations of fixed tissue (Tankersley and Dimock 1992). Large blood vessels with periodic branches extending horizontally into the lamellar tissue (Figs. 4C and 4D) were located in the center of each septum and ran dorso-ventrally down the gill. The gills of several individual mussels appeared to expand and contract rhythmically ($\approx 6-8$ beats min^{-1} ; $N=6$) in a pattern that was independent of valve activity and was most likely linked to the cardiac rhythm and subsequent blood transport through the vascularized interlamellar septa or to muscular activity of the water canals and ostia (Gardiner *et al.* 1991). This relatively large scale rhythmic motion of entire demibranchs may aid water transport through the gills or assist the particle capture and transport by changing or optimizing the position or shape of the ctenidia.

Although the fixed viewing angle of the endoscope limited observations to the distal ends of the water tubes and associated epithelium, numerous ostia, arranged in parallel horizontal bands and leading from interfilament canals, were clearly visible on the

inner surface of the lamellar tissue which essentially comprises the "floor" and "walls" of the suprabranchial cavity (Fig. 4B). Fluorescent beads not retained by the gills could be seen moving vertically upward within the water tubes and becoming entrained in the faster flowing water traveling posteriorly through the suprabranchial cavity, indicating that particles approximately 10 μm in diameter are not retained with 100% efficiency by P. cataracta. Although flow rates within the suprabranchial chamber could not be determined, flow appeared relatively laminar and unaltered by the presence of the endoscope. The trajectories of particles traveling near the walls of the water tubes were often influenced by the beating of ciliated epithelial cells lining the inner lamellar surface, which may aid in cleansing the inner surfaces of the lamellae and maintaining flow through the water tubes as suggested for the abfrontal cilia of Mytilus (Jones *et al.* 1990). Frequently, particles suspended in the suprabranchial cavity were observed to abruptly change direction and move back into the water tubes more anteriorly in the suprabranchial cavity. This rapid change in flow velocity most likely represented either counter-flow equalizing pressure differences between the infra and suprabranchial chambers after lateral cilia stopped beating (Foster-Smith 1976; Jørgensen 1982; Silvester and Sleight 1984; Jones and Allen 1986), or pressure differences produced by rapid valve adduction thought to be used for exchanging mantle fluid as well as the ejection of pseudofeces (Morton 1983).

Brood Chamber Morphology and Observations of Glochidial Release

The presence of developing larvae in the water tubes of marsupial gills caused the suprabranchial cavity to be significantly wider than that of non-marsupial gills (compare Figs. 4A and 4E). Brood chambers packed with glochidia were capped at their distal (dorsal) end by formal extensions of the interlamellar septa connecting the opposing lamellae (Fig. 4E), providing additional evidence for the physical isolation of developing larvae within the brood chambers from the surrounding water (Tankersley and Dimock

1992). Secondary water tubes located on the lateral and medial end of the brood chambers were open, and particles could be seen streaming from these openings and entering the suprabranchial cavity (Fig. 4E). Nevertheless, the number and speed of particles were substantially less than in non-marsupial gills of mussels exposed to the same particle concentration, suggesting that flow through gravid marsupial gills is markedly reduced relative to flow in non-marsupial demibranchs. This observation is consistent with predictions based upon morphometric and hydromechanical analysis of water tubes and brood chambers of marsupial and non-marsupial gills (Tankersley and Dimock 1992).

Following larval release, marsupial gills remained distended (medio-laterally) and the thin interlamellar septa forming the anterior/posterior walls of the brood chambers were clearly visible (Fig. 4F). Although direct *in vivo* observations of the secondary water tubes were not possible, particles were seen only entering the suprabranchial cavity from locations near the left and right ends of the brood chambers, indicating that the secondary septa still were present and prevented water flow into the empty central brood chambers (primary water tubes).

Figure 5 is a sequence of frames from a time-lapse video recording of the release of glochidia *via* the suprabranchial cavity. Glochidia discharged from the uncapped brood chambers into the suprabranchial chamber were initially bound together by mucus and larval threads and many could be observed gaping widely and rapidly adducting their valves as they progressed posteriorly toward the exhalant siphon. The posterior region of marsupial gills of several mussels collected during the season of larval release contained empty but laterally distended brood chambers with the anterior portion of the ctenidia possessing only partially filled and uncapped brood chambers, thus providing additional evidence for the sequential postero-anterior release of glochidia. Although Richard *et al.* (1991) provide indirect evidence for the release of larvae through the ventral margin of the gill in *Pyganodon grandis*, the swollen septa of the uncapped brood chambers of *P. cataracta* (Fig. 5A) resemble descriptions of the enlarged terminal ends of the brood

chambers of *P. grandis* (Richard et al., 1992), suggesting that the previous reports may have been based upon regions of gravid ctenidia which had already initiated glochidial release through dorsal openings in the brood chambers. Time-lapse recordings showed quite dramatically that glochidia were expelled from the brood chambers by the muscular contraction of gill lamellae and transported posteriorly by the forceful flow of water within the secondary water tubes and suprabranchial chamber. Flow rates within the suprabranchial cavity of gravid marsupia appeared to be highest during periods of larval release, suggesting that in addition to their providing lumina for gill irrigation and particle filtration, the secondary water tubes may have an important role in larval release. Because latex particles suspended within the suprabranchial chamber frequently reversed direction, the observed pulses of high velocity flow through the marsupial gills probably result from rapid valve adductions rather than from abrupt changes or interruptions in the activity of lateral cilia (Jørgensen 1982, Jones and Allen 1986; Silvester 1988).

The present observations provide the first evidence directly linking changes in the suspension feeding of females during gravid periods (Tankersley 1992) to the dramatic alterations in gill morphology and architecture associated with larval incubation (Tankersley and Dimock 1992). Furthermore, endoscopy provides a unique perspective of the processes of particle capture and transport and the fluid dynamics associated with the eulamellibranch gill. Future studies using endoscopic techniques should permit quantification of the patterns of water movement through the mantle cavity and interlamellar spaces which influence suspension feeding (Famme and Kofoed 1983) and are most likely altered during periods of larval incubation. Moreover, additional observations are needed to compare the mechanisms of larval release of unionid mussel species possessing different marsupial morphologies, as well as perhaps being able to document the process of embryo deposition into the brooding chambers.

ACKNOWLEDGMENTS

This material was funded in part by a National Science Foundation Dissertation Improvement Grant (BSR-9001345) to the senior author. We would like to thank J.E. Ward et al. for allowing us to view preprints of their papers and helping us obtain the necessary endoscopic equipment to complete the study. We are grateful to the Olympus Corp. for loaning us the endoscope and Dr. I. Miller for the use of his matrix camera and video analysis equipment. Drs. W. Conner, G. Esch, M. Leary, W. Silver, J.E. Ward and two anonymous reviewers provided constructive comments on earlier versions of the manuscript.

REFERENCES

- Atkins, D. 1937. On the ciliary mechanisms and interrelationships of lamellibranchs. Part III: Types of lamellibranch gills and their food currents. *Q. J. Micr. Sci.*, **79**: 375-421.
- Beninger, P.G., Le Pennec, M., and Donval, A. 1991. Mode of particle ingestion in five species of suspension-feeding bivalve molluscs. *Mar. Biol.* **108**: 255-261.
- Beninger, P.G., Ward, J. E., MacDonald, B.A. and Thompson, R.J. in press. Gill function and particle transport in Placopecten magellanicus (Mollusca: Bivalvia) as revealed using video endoscopy. *Mar. Biol.* {09
- Bernard, R.R. 1974. Particle sorting and labial palp function in the pacific oyster Crassostrea gigas (Thunberg, 1795). *Biol. Bull.* **146**: 1-10.
- Dral, A.D.G. 1967. The movements of the latero-frontal cilia and the mechanisms of particle retention in the mussel (Mytilus edulis L.). *Neth. J. Sea Res.* **3**: 391-422.
- Famme, P. and Kofoed, L.H. 1983. Shunt water flow through the mantle cavity in Mytilus edulis L. and its influence on particle retention. *Mar. Biol. Letters*, **4**: 207-218.
- Foster-Smith, R.L. 1975a. The role of mucus in the mechanism of feeding in three filter-feeding bivalves. *Proc. Malac. Soc. Lond.* **41**: 571-588.
- Foster-Smith, R.L. 1975b. The effect of concentration of suspension on the filtration rates and pseudofaecal production for Mytilus edulis L., Cerastoderma edule (L.) and Venerupis pullastra (Montagu). *J. exp. mar. Biol. Ecol.* **17**: 1-22.
- Foster-Smith, R.L. 1976. Pressures generated by the pumping mechanism of some ciliary filter-feeders. *J. exp. mar. Biol. Ecol.* **25**: 199-206.
- Foster-Smith, R.L. 1978.. The function of the pallial organs of bivalves in controlling ingestion. *J. Mollusc. Stud.* **44**: 83-99.
- Gardiner, D.B., Silverman, H., and Dietz, T.H. 1991. Musculature associated with the water canals in freshwater mussels and response to monoamines in vitro. *Biol. Bull.* **180**: 453-465.

- Hoeh, W.R. 1990. Phylogenetic relationships among eastern North American Anodonta (Bivalvia: Unionidae). *Malacol. Rev.* **23**: 63-82.
- Jones, H.D., and Allen, J.R. 1986. Inhalant and exhalant pressures in Mytilus edulis L. and Cerastoderma edule (L.). *J. exp. mar. Biol. Ecol.* **98**: 231-240.
- Jones, H.D., Richards, O.G., and Hutchinson, S. 1990. The role of ctenidial abfrontal cilia in water pumping in Mytilus edulis L. *J. exp. mar. Biol. Ecol.* **143**: 15-26.
- Jørgensen, C.B. 1975. On gill function in the mussel Mytilus edulis L. *Ophelia*, **13**: 187-232.
- Jørgensen, C.B. 1976. Comparative studies on the function of the gills in suspension feeding bivalves, with special reference to effects of serotonin. *Biol. Bull.* **151**: 331-343.
- Jørgensen, C.B. 1981. Feeding and cleaning mechanisms in the suspension feeding bivalve Mytilus edulis. *Mar. Biol.* **65**: 159-163.
- Jørgensen, C.B. 1982. Fluid mechanics of the mussel gill: the lateral cilia. *Mar. Biol.* **70**: 275-281.
- Jørgensen, C.B., and Ockelmann, K. 1991. Beat frequency of lateral cilia in intact filter feeding bivalves: effect of temperature. *Ophelia*, **33**: 67-70
- Jørgensen, C.B., Kiørboe, T., Møhlenberg, F., and Riisgård, H.U. 1984. Ciliary and mucus-net filter feeding, with special reference to fluid mechanical characteristics. *Mar. Ecol. Prog. Ser.* **15**: 283-292.
- Kat, P.W. 1984. Parasitism and the Unionacea (Bivalvia). *Biol. Rev. Camb. Philos. Soc.* **59**: 189-207.
- Kays, W.T., Silverman, H., and Dietz, T.H. 1990. Water channels and water canals in the gill of the freshwater mussel, Ligumia subrostrata: ultrastructure and histochemistry. *J. exp. Zool.* **254**: 256-269.
- Kiørboe, T., and Møhlenberg, F. 1981. Particle selection in suspension-feeding bivalves. *Mar. Ecol. Prog. Ser.* **5**: 291-296.

- Lefevre, G., and Curtis, W.C. 1910. The marsupium of the Unionidae. *Biol. Bull.* **19**: 31-34.
- MacGinitie, G.E. 1941. On the method of feeding of four pelecypods. *Biol. Bull.* **80**: 18-25.
- Matteson, M.R. 1955. Studies on the natural history of the Unionidae. *Amer. Midl. Natur.* **53**: 126-145.
- Morton, B. 1983. Feeding and digestion in Bivalvia. In: *The Mollusca Vol. 5 Physiology Part 2.* Edited by A.S.M. Saleuddin and K. M. Wilbur. Academic Press, Inc. New York. pp. 65-147.
- Morton, J.E. 1960. The functions of the gut in ciliary feeders. *Biol. Rev.* **35**: 92-140.
- Newell, R.I.E., and Jordan, S.J. 1983. Preferential ingestion of organic material by the American oyster *Crassostrea virginica*. *Mar. Ecol. Prog. Ser.* **13**: 47-53.
- Ortmann, A.E. 1911. A monograph of the Najades of Pennsylvania. *Mem. Carnegie Mus.* **4**: 279-347.
- Reid, R.G.B., McMahon, R.F., Foighil, D.Ó. and Finnigan, R. 1992. Anterior currents and pedal feeding in bivalves. *Veliger*, **35**: 93-104.
- Richard, P.E., Dietz, T.H., and Silverman, H. 1991. Structure of the gill during reproduction in the unionids *Anodonta grandis*, *Ligumia subrostrata* and *Carunculina parva texasensis*. *Can. J. Zool.* **67**: 1744-1754.
- Ridewood, W.G. 1903. On the structure of the gills of Lamellibranchia. *Phil. Trans. Roy. Soc. Lond. B.* **211**: 147-284.
- Silvester, N.R. 1988. Hydrodynamics of flow in *Mytilus* gills. *J. exp. mar. Biol. Ecol.* **120**: 171-182.
- Silvester, N.R. and Sleigh, M.A. 1984. Hydrodynamic aspects of particle capture by *Mytilus*. *J. mar. biol. Assoc. U.K.* **64**: 859-879.
- Stasek, C.R. 1963. Synopsis and discussion of the association of ctenidia and labial palps in the bivalved Mollusca. *Veliger*, **6**: 91-96.

- Tankersley, R.A. 1992. Larval brooding by the freshwater unionid mussel Anodonta cataracta: its effect on filtration, ventilation, and respiration. Ph.D. dissertation, Wake Forest University, Winston-Salem, NC. *
- Tankersley, R.A., and Dimock, R.V. Jr. 1992. Quantitative analysis of the structure and function of the marsupial gills of the freshwater mussel Anodonta cataracta. Biol. Bull. **182**: 145-154.
- Ward, J.E., Beninger, P.G., MacDonald, B.A., and Thompson, R.J. 1991. Direct observations of feeding structures and mechanisms in bivalve molluscs using endoscopic examination and video image analysis. Mar. Biol. **111**: 287-291.
- * Ward, J.E., MacDonald, B.A., Thompson, R.J., and Beninger, P.G. in press. Mechanisms of suspension-feeding in bivalves: resolution of current controversies using endoscopy. Limnol. Oceanogr.
- Yokley, P. Jr. 1972. Life history of Pleurobema cordatum (Rafinesque, 1820) (Bivalvia: Unionacea). Malacologia, **11**: 351-364.

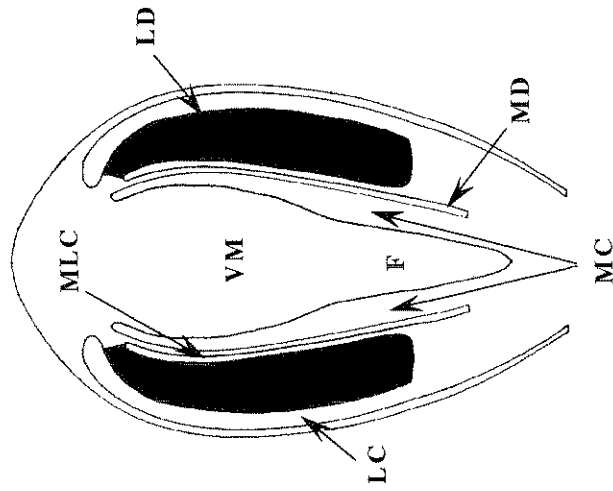
FIGURE CAPTIONS

- Figure 1: A. Diagrammatic representation of the endoscope and video equipment used to monitor suspension feeding in intact Pyganodon cataracta. B. Cross-section through a gravid P. cataracta showing the position of the medial (MD) and lateral (LD) demibranchs and the location of the lateral (LC), medial (MC) and medio-lateral cavities (MLC). (Additional abbreviations: F, foot; VM, visceral mass).
- Figure 2: Video micrographs of the frontal surface of a medial demibranch (md) (Fig. 2A) and the medial cavity (space between medial demibranchs) (Fig. 2B) of an active mussel showing the movement of fluorescent latex particles (lp) within the infrabranchial region and on the gill filaments. Particles reaching the ventral edge of a medial gill become bound and concentrated in a mucous string (ms) traveling anteriorly along the ventral food groove (fg) toward the palps and mouth (Fig. 2C). At the ventral margin of the palps (p), mucus bound particles are transferred as continuous strings (ms) to the inner surfaces of the palps (Figs. 2D and 2E) which consists of bands of deep, heavily ciliated grooves (cg) (Fig. 2F).
- Figure 3: Video micrographs of marsupial gills showing the stretched epithelium of the ventral edge during periods of larval incubation (Fig. 3A) and the convoluted appearance of the same region following larval release (Fig. 3B). (Additional abbreviations: ld, lateral demibranch; lp, latex particles; md, medial demibranch)
- Figure 4: Endoscopic views of the dorsal openings of the primary water tubes of non-marsupial gills showing the location of the interlamellar septa (ils) (Figs. 4A and 4B). Large arterial blood vessels (av) are located in the center of each septum (Fig. 4C) with branches entering the lamellar tissue (Fig. 4D). Rows of ostia (o) (Fig. 4B) leading from interfilament canals are apparent on the inner

surfaces of the water tubes. Similar views of the suprabranchial cavity of marsupial gills during brooding (Fig. 4E) and post larval-release periods (Fig. 4F) reveal that the distal openings of the expanded brood chambers (bc) of gravid marsupia are capped by extensions of the interlamellar septa (ils) but secondary water tubes (swt) located on the left and right ends of the brood chambers open directly into the suprabranchial cavity and are used for water transport (Fig. 4E). Brood caps were absent in marsupial gills immediately following larval release (Fig. 4F), but secondary septa were still present as evidenced by the flow of latex particles into the suprabranchial cavities only from locations near the left and right edges of the brood chambers .

Figure 5: Video micrograph sequence (Figs. 5A-D) of the release of glochidia via the suprabranchial cavity and exhalant siphon. Larvae were discharged from brood chambers by the rapid adduction of the valves and the muscular contraction of the gills. Most glochidia were active following release as evidenced by the rapid adduction of their valves (Fig. 5D).

B



A

